

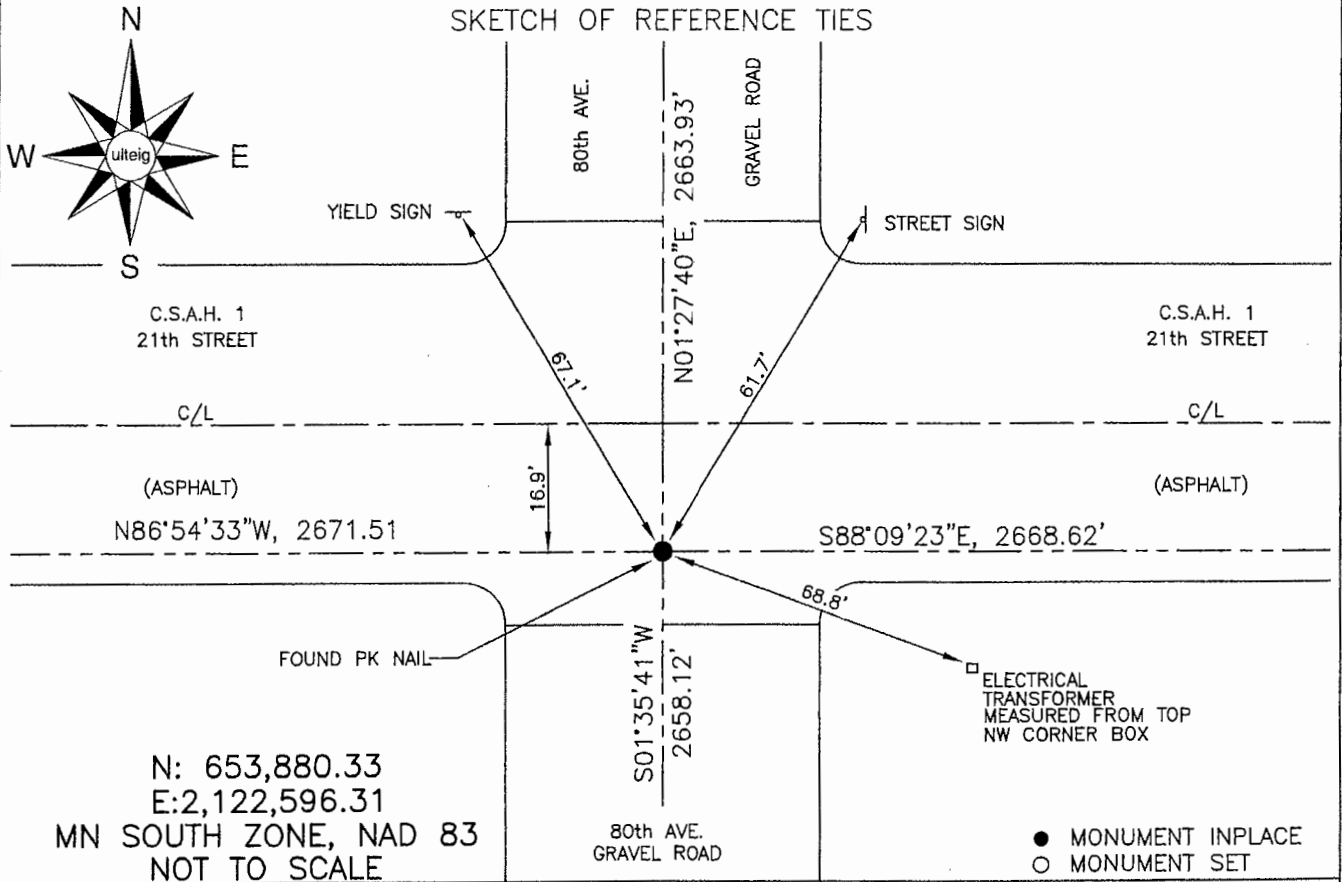
CERTIFICATE OF LOCATION OF GOVERNMENT CORNER

NORTHEAST Corner of Section 29, Township 105 N, Range 42 W, 5th P.M.

STATE OF MINNESOTA, County of MURRAY

At the corner location shown on the sketch:

- On 9/11/2006 found a PK NAIL ON THE N-S C/L OF THE GRAVEL ROAD
DATE & 16.9' SOUTH FROM THE E-W C/L OF THE ASPHALT PAVEMENT.
- left monument as found, lowered monument, removed monument (explain)
- On _____ placed a _____
DATE



Statement of evidence relative to this corner location is on back of page.

I hereby certify that this document and the data contained herein was prepared by me or under my direct supervision.

Thomas V. Zeff 9/12/06
Thomas V. Zeff DATE

- Registration No. 44563
- Land Surveyor, Professional Engineer
- County Surveyor, County Engineer

OFFICE OF THE COUNTY RECORDER

County of _____

I hereby certify that this document was filed in the Co. Recorders office at _____ .M. on the _____ day of SEP 28 2006 A.D., 20____

County Recorder James V. Johnson
 By _____, Deputy

DOCUMENT NO. _____

STATEMENT OF EVIDENCE:

NORTHEAST CORNER, SECTION 29, T. 105 N., R. 42 W.,
MURRAY COUNTY, MINNESOTA

- 1861 D.W. Wellman & S.S. Smoot, US. Deputy Surveyors,
monumented corner.
- 6/13/1969 Murray Co., located an iron rod on corner.
Ties N-17' to C/L of new road;
SW-69.55' to "X" on culvert nut;
NW-78.6' to "X" on culvert nut;
SE-49.5' to nail & cap on power pole.
- 5/6/1993 Murray Co., located a 3/4" steel pin, 12" below grade on corner.
Ties: N-17' to C/L of County Road;
SE-49.7' to nail & cap on power pole;
NW-48.3' to nail & cap on corner post;
NW-66.22' to nail & cap on "Yield Sign";
- 10/12/1993 Murray Co., placed a PK nail (in asphalt).
- 9/11/2006 Ulteig Engineers, Inc., Survey Crew, Brian Payne Party Chief,
found PK nail, on N-S gravel road C/L and 16.9' south
from E-W asphalt pavement C/L.
Ties: N-2663.93' to E 1/4 corner, Section 20;
S-2658.12' to E 1/4 corner, Section 29;
E-2668.62' to N 1/4 corner, Section 28;
W-2671.51' to N 1/4 corner, Section 29;
NE-61.7' to "Street Sign";
SE-68.8' to NW corner of electrical transformer box;
NW-67.1' to "Yield Sign".
N-16.9' to E-W C/L of C.S.A.H. 1.